



Springfield Regional Arts Council presents

First Friday Art Walk

Members host events on the first Friday of the month or you can catch the displays throughout the month during regular hours. April's First Friday events will be on April 7th with variable hours between 5-10 pm.

Best of Luck Beer Hall



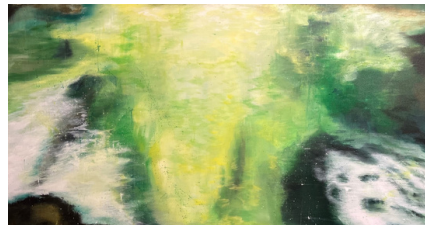
Best of Luck Beer Hall opens at 2 pm and will be showing the artwork of **Hunter Fritz and Janelle Patterson**. They will be featuring their take on a Mint Julep as well as \$1 off pints of Yuengling Traditional Lager and Great Divide Strawberry Rhubarb all day!

BookMarx

Join **BookMarx** for FFAW to see work by **Chad Woody** till 9 pm. **Cryptid America** displays the creation of a tabletop game based on American cryptid folklore. See Bigfoot, Moth-man, Jackalopes, and other legends turned into underground tribes that you control in the game!



Obelisk Home



Obelisk Home has opening receptions for two exhibitions this FFAW! Their April Featured Artist, **Sarah Gatewood**, is exhibiting her collection, **An Abstract Reality** in the Main Gallery. Additionally, **OTC Students** will be exhibiting work in the Lower Level Gallery! There will be live music and complimentary refreshments to enjoy from 6 - 10 pm.

The Creamery Arts Center



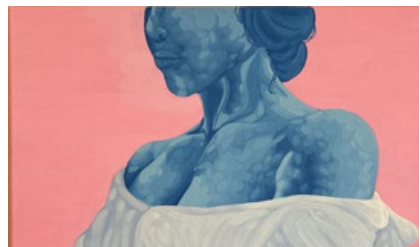
Join the **Springfield Regional Arts Council** and **Project HEAL** for their juried art exhibit, **Recognize, Release, & Transform**, open for FFAW from 5 - 7 pm. This exhibition celebrates survivors in the community, be sure to check it out!

Formed: An Artist Collective

Formed: An Artist Collective is proud to present: **FACES, PLACES AND COLORFUL SPACES** by **Alicia Farris**! Stop by on First Friday or visit anytime during the month to see this extraordinary exhibit. Enjoy refreshments and meet Alicia at April's FFAW from 6-9 pm.



OTC Fine Arts Department



Perception through Reflection is a group exhibition of work by **OTC students** in painting, drawing, and portfolio development classes. This work explores the traditional categories of "portrait" and "landscape" through each artist's creative lens. Catch the opening reception for the show on display in **Obelisk Home's Lower Level Gallery** from 6 - 10 pm.

April
2023

map on
page 2!



@firstfridayartwalk



@artwalksgf

springfield regional
arts
council

downtown arts district map




P parking

art walk venue

 sculpture walk art

 @sculpturewalksgf

 @sculpturewalkspringfield

sculpturewalkspringfield.org

Sculpture Walk Springfield features sculptures by local, national, and international artists throughout downtown. Find them on the map and visit their website for an audio tour on Otocast.



meet our ffaaw members!

Meet our Art Walk Members who are open this month!



Artistic Photography at the Monarch Art Factory, 600 W. College Street Suite 112, Open for FFAW. (417) 737-190, 417artisticphotography.com



Drury Pool Art Center, 940 N. Clay St. will be open for FFAW. Open regularly MTWF 9am-5pm, Thurs 9am-7pm. (417) 873-6337.



Hold Fast Brewing, 235 N. Kimbrough Ave., open for FFAW 12pm-11pm. Open regularly Mon-Thurs 3-9pm, Fri-Sat 12-11pm and Sun from 11am-7pm. hfbrewing.com (417) 761-2318.



Best of Luck Beer Hall, 313-B-S S. Jefferson Ave., Open for FFAW. Open regularly Tue.-Thu. 5pm-12am, Fri.-Sat. 2pm-1am, Sun. 2-7pm. (417) 522-9009, <https://bestofluckbeerhall.com/>



Fresh Gallery, 401 N. Boonville, open 6-9pm for FFAW. Fresh is a co-op gallery home to over 20 juried artists working in a variety of media. Open regularly Tues-Sat 11am-5pm. freshgallery.org, (417) 862-9300



J.L. Long Traders, 318 W. Walnut, open for FFAW 5-9pm. Find unique items and work by local craftsmen. Their Spring hours are Wed-Sun 1-5pm or by appointment. (417) 771-5452, jllongtraders.com



BookMarx, 325 E. Walnut St., Ste. 101, New & used books, art, and Googey the cat! Open until 9pm for FFAW, regularly Mon-Sat 10:30am-7pm. facebook.com/bookmarxbooks



Forming Art Studios, 330 South Ave, open for FFAW 6-9pm only. Peek in on their seven resident artists and sign up for classes and workshops! formedgallery.com/classes



Obelisk Home, 214 W. Phelps Ste 101, open 6-10pm for FFAW. Art gallery, retail store, and interior design! Three levels to explore. Open regularly Tues-Fri 10am-6pm & Sat 10am-5pm. obeliskhome.com (417) 616-6488



Creamery Arts Center, 411 N. Sherman Parkway, open 5-7pm for FFAW. Open regularly Mon-Fri 9am-5pm. springfieldarts.org, (417) 862-ARTS (2787)



Formed: An Artist Collective, 210 E. Walnut Street, open for FFAW 6-9pm. A multi-artist gallery and retail space hosting forty local and emerging artisans. Open regularly: Tue - Thurs 10am-6pm, Fri - Sat 10am-7pm, Sun 10am-2pm. (417) 350-1142, formedgallery.com



Park Central Branch Library, 128 Park Central Square, open for FFAW 6:30pm-9pm. Downtown's library hosts art and frequent artist talks. Open regularly Monday-Saturdays 10am-6pm, Closed Sundays. (417) 831-1342



@artwalksgf



@firstfridayartwalk



thank you to
our sponsors!

Sculpture Walk Springfield



Mark your calendars for **April 29th!** **Sculpture Walk Springfield** is going to be debuting their new collection on April 29th and hosting an **Art Alley Party** in Downtown Springfield. There will be live music by **Red Light Runners** and beer from **Tie & Timber!**

Artistic Photography

Artistic Photography will be open for the Art Walk between **5:30-7:30 pm**. Join them to see their show **SUPERSTARS**, a show about sharing the journey, triumphs, and obstacles through dance at the Monarch Art Factory.



J.L. Long Traders



J.L. Long Traders will be open **11am - 9pm** for April's Art Walk! They are featuring several new local products this month that they're excited about including skincare products from Good Skin Day, tea from Queen City Teas and Steams, and apparel from The Good & Glory Co. Be sure to swing by to check out all the new goodies!

Hold Fast Brewing



Hold Fast Brewing is thrilled to be welcoming back **Allie and Gracie**. You've seen their full band, Allie and the Catz, rock out with Hold Fast Brewing before. Now is your chance to see this dynamic duo up close and personal. Get there early so you can grab dinner from the food truck and top it all off with your favorite Hold Fast Brew. Brewery opens at **12 pm**, food truck starts serving by **5 pm**, and music starts at **7 pm**. Cheers

Drury Pool Arts Gallery

While **Drury's Pool Arts Gallery** will be closed for April's FFAW, you can catch their **Annual All Student Competitive Exhibition** on display throughout the month of April, **Monday-Friday, 9 - 5 pm** and **Thursday, 9 - 7 pm**. This annual competitive exhibition is open to all Drury students and includes a variety of media and conceptual approaches.



Park Central Branch Library



Park Central Library and the SRAC have collaborated to feature artworks inspired by the One Read 2023 selection: "**The Seed Keeper**" by **Diane Wilson**. The opening reception is at Park Central Branch Library from **6:30 - 9 pm** with the **award ceremony** at **7:30 pm**. Vote for your favorite artwork throughout the evening for the **People's Choice Award!**

Fresh Gallery



Join **Fresh Gallery** from **6-9 pm** for FFAW to help them celebrate spring and meet their Featured Artist, photographer **Ryan Burton**. While at Fresh, sign up to become a Friends of Fresh Member and receive 10% off purchases made at the gallery!

Are you a business interested in being a part of the Art Walk?

We offer a few different options for businesses to get involved with FFAW! From becoming a participating venue to sponsoring FFAW, we have it all! Check out our website or email artwalk@springfieldarts.org to learn more!

Are you an artist interested in being a part of the Art Walk?

Become an Art Walk Artist by sending 3-5 portfolio images along with a brief bio to artwalk@springfieldarts.org to become a part of our Venue Artist Registry!

First Friday Art Walk works to increase arts accessibility and foot traffic in the Downtown Arts District in Springfield, MO.



The Art Walk is a program of the **Springfield Regional Arts Council**.

