



Springfield Regional Arts Council presents First Friday Art Walk

Members host events on the first Friday of the month or you can catch the displays throughout the month during regular hours. February's First Friday events will be February 3rd with variable hours between 5-10pm.

1 Obelisk Home



Obelisk Home is excited to have guest artist, **Colby Kern**, show his newest collection of work, **Get Lost**. The opening reception will be First Friday, February 3rd from 6-10pm.

2 Fresh Gallery

Join **Fresh Gallery** from 6-9pm for FFAW and Featured Artists reception for **Andrew Batcheller** and **Andrew Mann**! In celebration of the new year, they will be drawing for a spot in one of artist **Cheryl Vowels**' highly attended glass classes.



3 Creamery Arts Center



Featuring Artists selected from the **SRAC**'s yearly member show, **Caught My Eye** offers an in-depth look at **8 artist's body of work**. The reception will also feature **live music** by local favorite, **Mark Barger**! The reception will run from 5-7pm.

4 Formed: An Artist Collective

MINI ART SHOW GRAND OPENING



FORMED: AN ARTIST
COLLECTIVE
210 E WALNUT ST
#100
SPRINGFIELD, MO
65806

FEB 3RD
2023

6:00 -
9:00 PM

Join **Formed** for their **Mini Art Show Grand Opening** and help raise money for the **On Angel's Wings** charity. Celebrate all things locally made (and Mini) from 6-9pm with **live music** by **Tony Menown** from 6:30-8:30pm.

5 Carolla Arts Exhibition Center

Featuring **Madeline Brice, Zoe Hawk, Cortney Metzger, and Dryden Wells**, **Contemporaries** explores work from recent alumni navigating a range of topical themes. The show will be open from 6-9pm for the Art Walk.



6 Drury Pool Arts Gallery



Check out **WEST** by **Gregory L. Booker** at **Drury Pool Arts Gallery** between 5-8pm for FFAW. "...The American West has been the subject matter of artists for hundreds of years and it is with great humility that I add these images to that history."

February
2023

map on
page 2!



@firstfridayartwalk



@artwalksgf

Find more details our website, ffaw.org/

springfield regional
arts
council

downtown arts district map



P parking

art walk venue

 sculpture walk art

 @sculpturewalksgf

 @sculpturewalkspringfield

sculpturewalkspringfield.org

Sculpture Walk Springfield features sculptures by local, national, and international artists throughout downtown. Find them on the map and visit their website for an audio tour on Otocast.



meet our ffaw members!

Meet our Art Walk Members who are open this month!



BookMarx, 325 E. Walnut St., Ste. 101, New & used books, art, and Googey the cat! Open **until 9pm** for FFAW, regularly Mon-Sat 10:30am-7pm. facebook.com/bookmarxbooks



Formed: An Artist Collective, 210 E. Walnut Street, open for FFAW 6-9pm. A multi-artist gallery and retail space hosting forty local and emerging artisans. Open regularly: Tue - Thurs 10am-6pm, Fri - Sat 10am-7pm, Sun 10am-2pm. (417) 350-1142, formedgallery.com



MSU's Brick City Gallery, 215 W. Mill. open for FFAW. Open regularly Mon-Fri 11am-6pm, and Sat from 12-4pm. (417) 836-6794 art.missouristate.edu/



Creamery Arts Center, 411 N. Sherman Parkway, open 5-7pm for FFAW. Open regularly Mon-Fri 9am-5pm. springfieldarts.org, (417) 862-ARTS (2787)



Funky Flaura's Unique Floral Design, 320 Park Central West, open for FFAW 10am-10pm. Open regularly Mon-Tue 11am-6pm, Wed-Fri 10am-6pm, Sat 10am-2pm. www.funkyflauras.com.



MSU's Robert and Margaret Carolla Arts Exhibition Center, 326 N. Boonville, open for FFAW. Open regularly Mon-Fri 11am-6pm and Sat 12-4pm (417) 836-6999 or sec.missouristate.edu



Drury Pool Art Center, 940 N. Clay St. will be open for FFAW. Open regularly MTWF 9am-5pm, Thurs 9am-7pm. (417) 873-6337.



Hold Fast Brewing, 235 N. Kimbrough Ave., open for FFAW 12pm-11pm. Open regularly Mon-Thurs 3-9pm, Fri-Sat 12-11pm and Sun from 11am-7pm. hfbrewing.com (417) 761-2318.



Obelisk Home, 214 W. Phelps Ste 101, open 6-10pm for FFAW. Art gallery, retail store, and interior design! Three levels to explore. Open regularly Tues-Fri 10am-6pm & Sat 10am-5pm. obeliskhome.com (417) 616-6488



Fresh Gallery, 401 N. Boonville, open **6-9pm** for FFAW. Fresh is a co-op gallery home to over 20 juried artists working in a variety of media. Open regularly Tues-Sat 11am-5pm. freshgallery.org, (417) 862-9300



J.L. Long Traders, 318 W. Walnut, open for FFAW 5-9pm. Find unique items and work by local craftsmen. Their Spring hours are Wed-Sun 1-5pm or by appointment. (417) 771-5452, jllongtraders.com



Park Central Branch Library, 128 Park Central Square, open for FFAW 6:30pm-9pm. Downtown's library hosts art and frequent artist talks. Open regularly Monday-Saturdays 10am-6pm, Closed Sundays. (417) 831-1342



Forming Art Studios, 330 South Ave, open for FFAW 6-9pm only. Peek in on their seven resident artists and sign up for classes and workshops! formedgallery.com/classes



@artwalksgf



@firstfridayartwalk

**thank you to
our sponsors!**



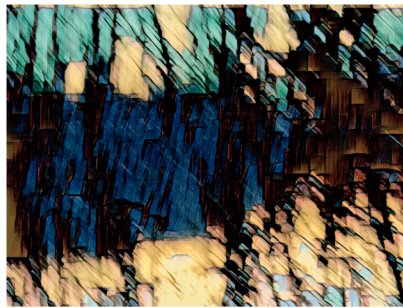
7 Hold Fast Brewing



MADDI WARREN
Hold Fast Brewing is thrilled to be kicking off Art Walk 2023 with the music of **Maddi Warren**. Brewery opens at **12pm**, food truck starts serving by **5pm**, and music starts at **7pm**. Cheers!

8 BookMarx

Local artist and chef **HJ Schumer** is showing at **BookMarx** between **10:30am-9pm** during the Art Walk. **Area 417** features his take on local life and landmarks in Springfield, MO.

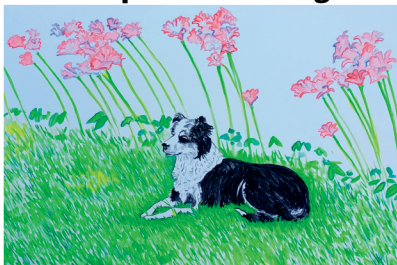


9 Sculpture Walk Springfield



Map #27 - Prairie Tamer by **Daniel Perry**. This piece was made possible by the **Bee Payne Stewart Foundation**.

10 Funky Flora's Unique Floral Design



Funky Flora's Unique Floral Design will be celebrating its very first Art Walk with multimedia artist **Jeremiah Gill**. His February exhibition will consist of colorful, floral, and Spring-themed works. Their Art Walk reception will run from **6-10pm**.

11 J.L. Long Traders

This month, **J.L. Long Traders** has hand-knitted hats by **Ana Smith**! Make sure you swing by to check them out along with their other local wares! Their Art Walk hours are from **11am-9pm**.



12 Park Central Branch Library



Park Central Branch Library will be open from **6:30-9pm** and will host painter **Cindy Quayle** with her exhibit **Bits and Pieces**. At **7pm**, **Hanna Henroid** will present an Art Talk: **"Across the Mediterranean: Mamluk Textiles in Europe"**. Their SPS highlight, **Weller Elementary**, is featuring watercolor creatures.

13 Brick City Galleries



The **Annual Foundations Exhibition** features work from the department's **foundations courses**. Works in this exhibition demonstrate students' understanding of various artistic concepts in two- and three-dimensional design and drawing, as well as the development of artistic skills through classroom instruction. The show will be open from **6-9pm** for the Art Walk.

Are you a business interested in being a part of the Art Walk?

We offer a few different options for businesses to get involved with FFAW! From becoming a participating venue to sponsoring FFAW, we have it all! Check out our website at ffaw.org/ or email artwalk@springfieldarts.org to learn more!

Are you an artist interested in being a part of the Art Walk?

Become an Art Walk Artist by sending 3-5 portfolio images along with a brief bio to artwalk@springfieldarts.org to become a part of our Venue Artist Registry!

First Friday Art Walk works to increase arts accessibility and foot traffic in the Downtown Arts District in Springfield, MO.



The Art Walk is a program of the **Springfield Regional Arts Council**.

