



Springfield Regional Arts Council presents First Friday Art Walk

Members host events on the first Friday of the month or you can catch the displays throughout the month during regular hours. November's First Friday events will be on November 3rd with variable hours between 4:30-10 pm.

Brick City Gallery

The **Biennial Design + Image** exhibition is a long-standing tradition, curated from the best works from all design and illustration classes from sophomore to senior levels. Swing by **MSU's Brick City Gallery** during November's Art Walk to check out the show from **6-9 pm!**



DESIGN + IMAGE
BIENNIAL EXHIBITION

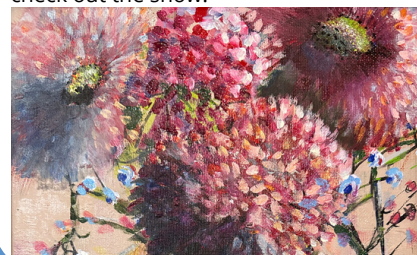
Jim D. Morris Center



Uncover hidden gems during **International Programs'** annual **Tour of the Globe!** Join their international students as they share beautiful sights and experiences from their hometowns all around the world. This cultural bazaar includes **food, games, and music, and is completely free to the community.** Come on out and become an experienced explorer with International Programs!

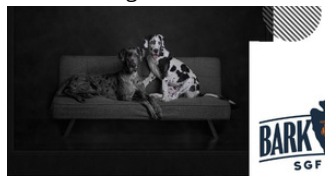
Gailey's Breakfast Cafe

Get ready for the holiday season at the annual **Gailey's Under \$150 Show** from **4:30-7 pm** for FFAW! This exhibition will be showcasing original artworks by **Carol Sineo, Nancy Day, Glee Kirby, Leisa Rowley, Jeanene Turney, Steve Maguire, Joellen Mittlestadt, Amy Asher, and Carol Snyder.** Be sure to check out the show!



Monarch Art Factory

Join **Artistic Photography at the Monarch Art Factory** for FFAW! They will be featuring **fine art portraiture** of the dogs from **The Bark Yard and Holiday Specials** for your fur babies too! Bring your furry friend and grab a glass of wine while you browse the gallery and get to know the dogs of The Bark Yard.



ARTWALK

Friday, November 3, 2023

Join us at First Friday Art Walk, on November 3!
We will be featuring fine art portraiture of the dogs from The Bark Yard and Holiday Specials for your fur babies too!

Bring your furry friend and a glass of wine with us while you browse through the gallery and get to know the dogs of The Bark Yard.

417artisticphotography.com
Angela Hughes, Photographic Artist
M. Photog. Co. Photog.

Monarch Art Factory
600 W. College, Suite 112
Downtown Springfield

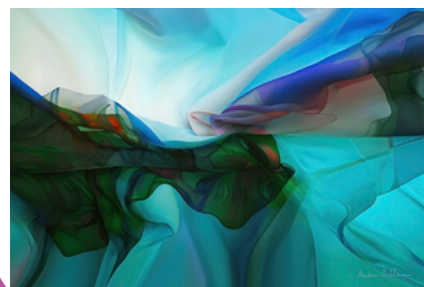
Sculpture Walk Springfield



Sculpture Walk Springfield and the **Hatch Foundation** are proud to present the next **ALLEYSCAPES** art, **Arbor** by **Professor Joshua Albers!** The new video art piece will be projected from sunset to midnight in the 'backstage alley' behind Hotel Vandivort and the Landers Theater (accessible via Robberson Alley). Be sure to check this immersive arts experience out during FFAW!

The Historic Holland Building

Join the **Historic Holland Building** for FFAW to see **Andrea Hellman** presenting her artwork from **6 - 8 pm** on the second floor of the **Historic Holland Building** on the square. You can enter the lobby at 205 Park Central E. and take the elevator or stairs to the second floor.



November 2023

map on page 2!



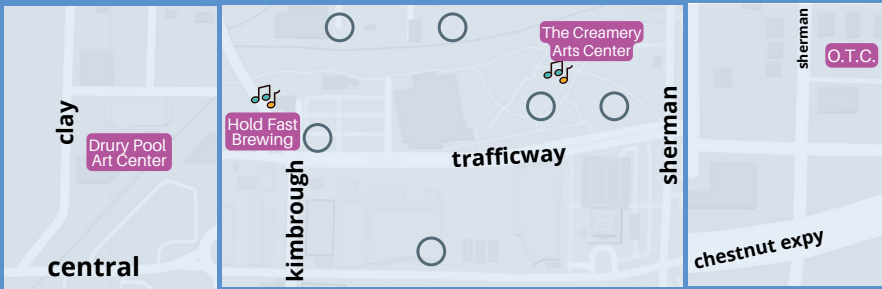
@firstfridayartwalk



@artwalksgf

springfield regional
arts
council

downtown arts district map



art walk venue



parking



sculpture walk art



@sculpturewalksgf



@sculpturewalkspringfield

sculpturewalkspringfield.org

Sculpture Walk Springfield features sculptures by local, national, and international artists throughout downtown. Thier 8th annual collection of sculptures has been installed and will remain up until Spring 2024.



meet our ffaw members!

Meet our Art Walk Members who are open this month!



Artistic Photography at the Monarch Art Factory, 600 W. College Street Suite 112, open 6-8pm for FFAW. (417) 737-1901 417artisticphotography.com



BookMarx, 325 E. Walnut St., Ste. 101, New & used books, art, and Googey the cat! Open until 9pm for FFAW, *regularly Mon-Sat 10:30am-7pm*. facebook.com/bookmarxbooks



Creamery Arts Center, 411 N. Sherman Parkway, open 5-7pm for FFAW. Open regularly Mon-Fri 9am-5pm. springfieldarts.org, (417) 862-ARTS (2787)



Drury Pool Art Center, 940 N. Clay St. will be open for FFAW. Open regularly MTWF 9am-5pm, Thurs 9am-7pm. (417) 873-6337.



Fresh Gallery, 401 N. Boonville, open 6-9pm for FFAW. Fresh is a co-op gallery home to over 20 juried artists working in a variety of media. Open regularly Tues-Sat 11am-5pm. freshgallery.org, (417) 862-9300



Forming Art Studios, 330 South Ave, open for FFAW 6-9pm only. Peek in on their seven resident artists and sign up for classes and workshops! formedgallery.com/classes



Formed: An Artist Collective, 210 E. Walnut Street, open for FFAW 6-9pm. A multi-artist gallery and retail space hosting forty local and emerging artisans. Open regularly: Tue - Thurs 10am-6pm, Fri - Sat 10am-7pm, Sun 10am-2pm. (417) 350-1142, formedgallery.com



Gailey's Breakfast Cafe, 220 E. Walnut St., open for FFAW. Open regularly Sun-Tue 7am-3pm, Wed-Sat 7am-9pm. gaileysbreakfast.com (417) 866-5500.



Historic Holland Building, 205 Park Central E., open 6-8pm for FFAW. Open regularly Mon-Fri 8am-5pm. thehollandbuilding.com (417) 861-7662.



Hold Fast Brewing, 235 N. Kimbrough Ave., open for FFAW 12pm-11pm. Open regularly Mon-Thurs 3-9pm, Fri-Sat 12-11pm and Sun from 11am-7pm. hfbrewing.com (417) 761-2318.



Hotel Vandivort, 305 E. Walnut, open for FFAW. The lobby is open 24/7! View their permanent collection including works by Julie Blackmon, Stephanie Cramer, Shelly Forbes, Dustin Burgert, and Jeff Broekhoven. hotelvandivort.com (417) 832- 1515.



J.L. Long Traders, 318 W. Walnut, open for FFAW 5-9pm. Find unique items and work by local craftsmen. Their Spring hours are Wed-Sun 1-5pm or by appointment. (417) 771-5452, jllongtraders.com



MSU's Brick City Gallery, 215 W. Mill. open for FFAW. Open regularly Mon-Fri 11am-6pm, and Sat from 12-4pm. (417) 836-6794 art.missouristate.edu/



MSU's Center for International Programs, at the Jim D. Morris Center, 301 S. Jefferson closed for FFAW.



MSU's Robert and Margaret Carolla Arts Exhibition Center, 326 N. Boonville, open for FFAW. Open regularly Mon-Fri 11am-6pm and Sat 12-4pm (417) 836-6999 or sec.missouristate.edu



Obelisk Home, 214 W. Phelps Ste 101, open 6-10pm for FFAW. Art gallery, retail store, and interior design! Three levels to explore. Open regularly Tues-Fri 10am-6pm & Sat 10am-5pm. obeliskhome.com (417) 616-6488



Park Central Branch Library, 128 Park Central Square, open for FFAW 6:30pm-9pm. Downtown's library hosts art and frequent artist talks. Open regularly Monday-Saturdays 10am-6pm, Closed Sundays. (417) 831-1342



Transformation Gallery & Tattoo, 330 E. Walnut, open for FFAW 6-9pm. Open regularly Tue-Sat 9am-6pm. (417) 869-2338, transformationgallery.com/

Forming Art Studios



Forming Art Studios are excited to announce their new opening hours! Now every Monday, Forming will have open studio time for any artist from 10 am - 4 pm. Stop by on First Friday and speak with some of their **artists in residence** and enjoy refreshments from **6 - 8:30 pm!**

Drury Pool Arts Center

Join **Drury University** at the **Pool Arts Gallery** to celebrate the opening reception of the **8th Annual Best of the Midwest High School Competitive!** The show will be open from **5-8 pm** for November's First Friday Art Walk!

Transformation Gallery & Tattoo

Transformation Gallery & Tattoo will be open for November's Art Walk from **6 - 9 pm** and are **showcasing art from their talented staff** - be sure to check it out!

Fresh Gallery



Fresh Gallery is excited to feature artist **Alan O'Neal** for FFAW! Fresh will be open from **6-9 pm** - be sure to go check out Alan's work!

Formed: An Artist Collective

Join **Formed** for FFAW, and help them celebrate their Artist of the Month, **Janelle Patterson**. Janelle specializes in painting bold, colorful subjects on both canvas and functional glassware. Visit with Janelle, enjoy light refreshments and live music by **Tony Menown**, and meet their artists from **6-9 pm** for FFAW!



Carolla Arts Exhibition Center

DIVER

ITY OCT. 6- NOV. 10 2023

DIFFERENCES THAT BRIGHTEN THE WORLD

Juried by an international panel, **Diversity: differences that brighten the world** is a collection of selected posters centered around the main topic of *What does Diversity mean to you?* Catch the show from **6-9 pm** for FFAW.

Obelisk Home

Join **Obelisk Home** from **6-10 pm** for FFAW for the opening reception of **Blackbird Stew** by **Ken Richardson**. He has assembled his own "art stew" by using a variety of ingredients to create sculpture, with steel being the common element. From bananas to blackbirds, it all goes in the pot!



Hold Fast Brewing

Hold Fast Brewing is thrilled to be welcoming back **Allie and Grace**. The ladies take the stage at **7 pm**. Get here early so you can grab dinner from the food truck and top it all off with your favorite Hold Fast Brew. Brewery opens at **12 pm**, food truck starts serving by **5 pm**, and music starts at **7 pm**. Cheers!



J.L. Long Traders



J.L. Long Traders will be open for FFAW from **10 am - 9 pm**. They are excited to be featuring the new winter collection of work by **Katie Hopkins**! Be sure to swing by on November's FFAW and check out!

Hotel Vandivort

Join **Hotel Vandivort** for November's FFAW to see work by **Abigail Ross**! You can view her work in the lobby from **5-7 pm** for the Art Walk - be sure to check it out!



Park Central Library Branch

The library will be open from **6:30-9 pm** for First Friday Art Walk. They will be featuring painter **Amara Paul** with her exhibit **Space**. There will also be an Art Talk at **7 pm** with **Maddie Pohl** presenting on **Case Study House #8** by **Charles and Ray Eames** and **Garrett Eckbo: merging the Organic and Inorganic in Modern Architecture**.



BookMarx



For November, **BookMarx** is pleased to present **Décor Pieces & Political Rants** featuring new paintings by **Roger Wissbaum**. The opening reception will be during November's FFAW from **6-9 pm**.

The Creamery Arts Center

Join the **Springfield Regional Arts Council** at **The Creamery Arts Center** for the opening reception of their **Annual Members' Showcase** sponsored by the **McQueary Family**. This show celebrates the talent of SRAC Members! Be sure to check out the show between **5-7 pm** during FFAW to enjoy the art, complimentary snacks and refreshments, and live music by the **Michelle Gilliam**!



thank you
to our
sponsors!

